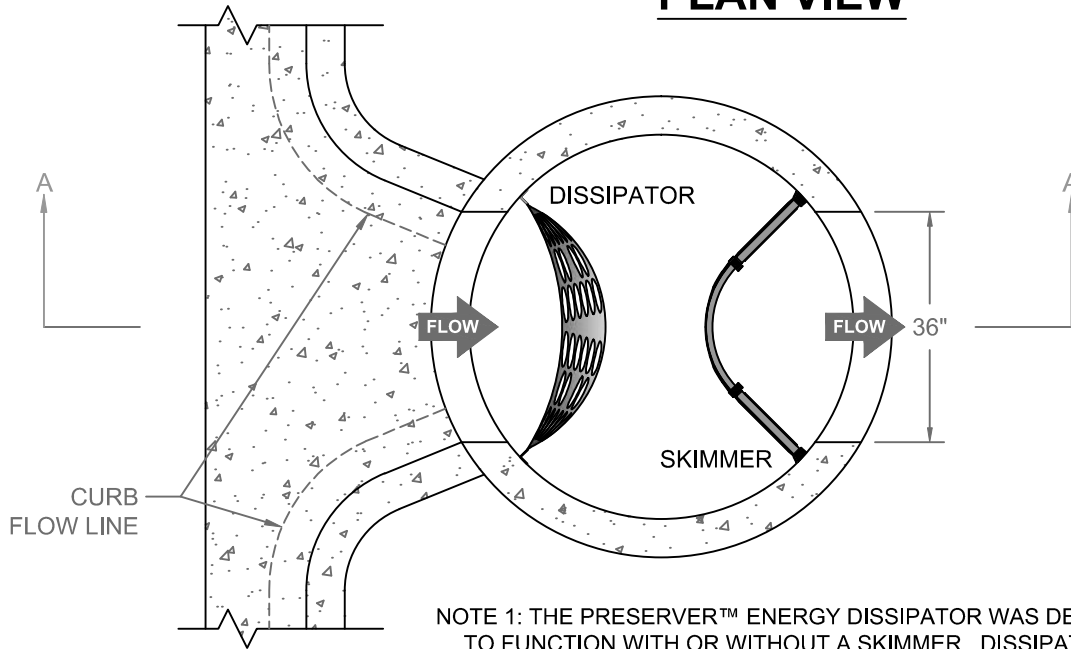
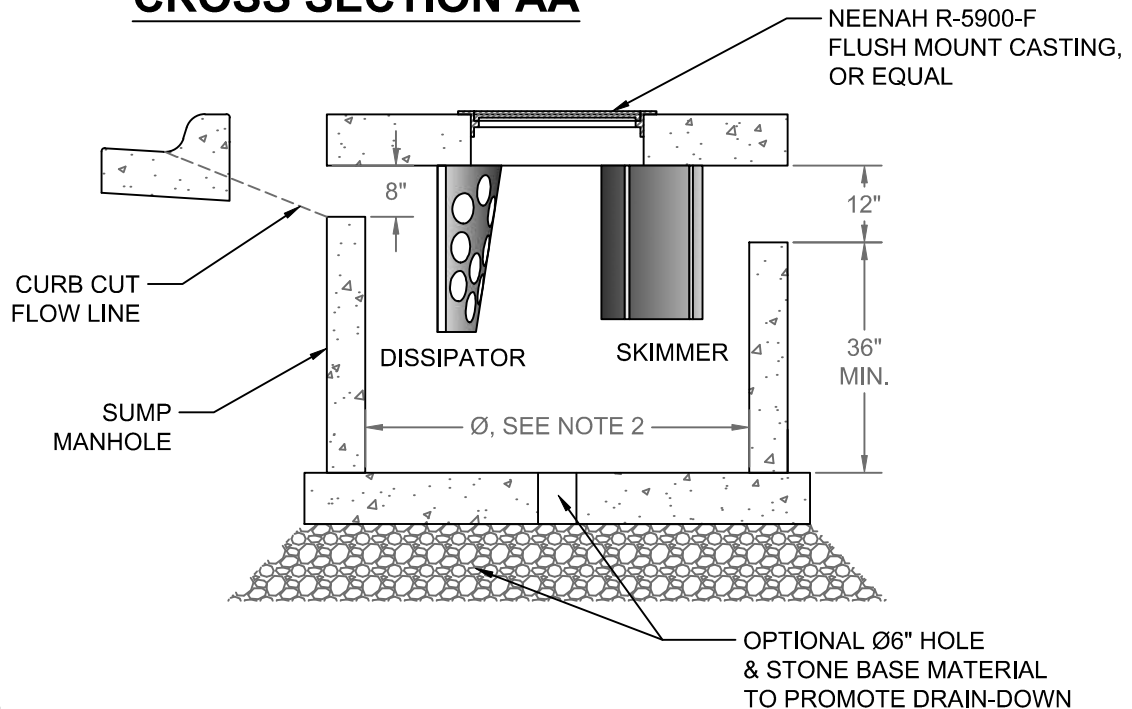


PLAN VIEW



NOTE 1: THE PRESERVER™ ENERGY DISSIPATOR WAS DESIGNED AND TESTED TO FUNCTION WITH OR WITHOUT A SKIMMER. DISSIPATORS & SKIMMERS CAN BE UTILIZED IN TANDEM OR INDEPENDENTLY.

CROSS SECTION AA



GENERAL NOTES:

- GRAVITY FLOW CAPACITY OF 5.25 CFS
- RIPRAP STILLING BASIN RECOMMENDED AT STRUCTURE OUTLET

NOTE 2: 4' MIN. STRUCTURE DIAMETER. 5' MIN. STRUCTURE DIAMETER WHEN USING DISSIPATOR & SKIMMER IN TANDEM

Not to Scale



MOMENTUM
ENVIRONMENTAL

877-773-0073 • www.MomentumEnv.com

THE PRESERVER™ CURB CUT DETAIL

ENERGY DISSIPATOR
AND/OR SKIMMER

PROUDLY
MADE IN THE
USA

QUALITY MATERIALS
• 100% recycled HDPE
• Stainless steel brackets
• Stainless steel hardware

CONCEPTUAL PLAN DISCLAIMER:

THIS GENERIC DETAIL DOES NOT ENCOMPASS THE SIZING, FIT, AND APPLICABILITY OF THE PRESERVER FOR THIS SPECIFIC PROJECT. IT IS THE ULTIMATE RESPONSIBILITY OF THE DESIGN ENGINEER TO ASSURE THAT THE STORMWATER SYSTEM DESIGN IS IN FULL COMPLIANCE WITH ALL APPLICABLE LAWS AND REGULATIONS. MOMENTUM ENVIRONMENTAL LLC DOES NOT APPROVE PLANS, SIZING, OR SYSTEM DESIGNS. THE DESIGN ENGINEER IS RESPONSIBLE FOR ALL DESIGN DECISIONS.